

Rodada Itaparica – Novembro 2012, Jatobá



Projeto INNOVATE: Abrangência, atividades e desafios

Johann Köppel (líder alemão do projeto Brasil-Alemanha)

e colaboradores: Edvânia, Guilherme, Maria do Carmo, Marianna, Michel,
Renata, Thaís, Verena, e mais outros e outras



INNOVATE: um de 12 projetos em todo o mundo

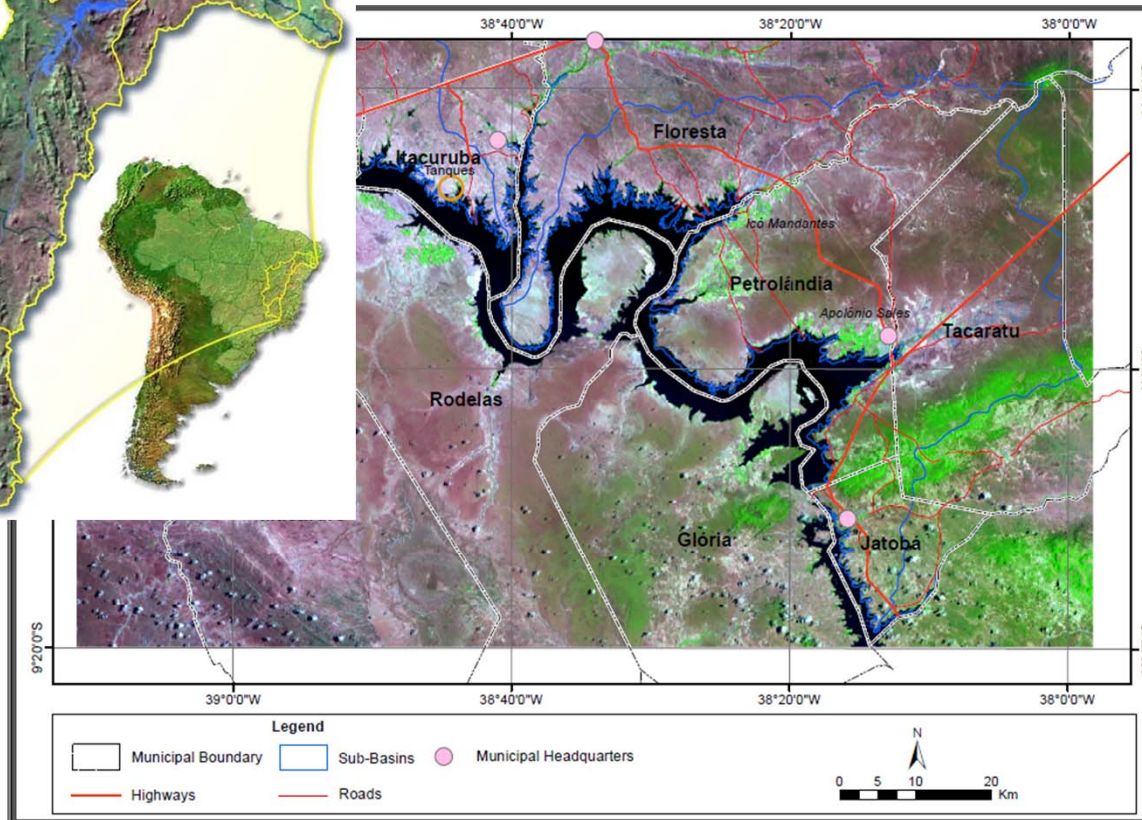


INNOVATE Research Profile

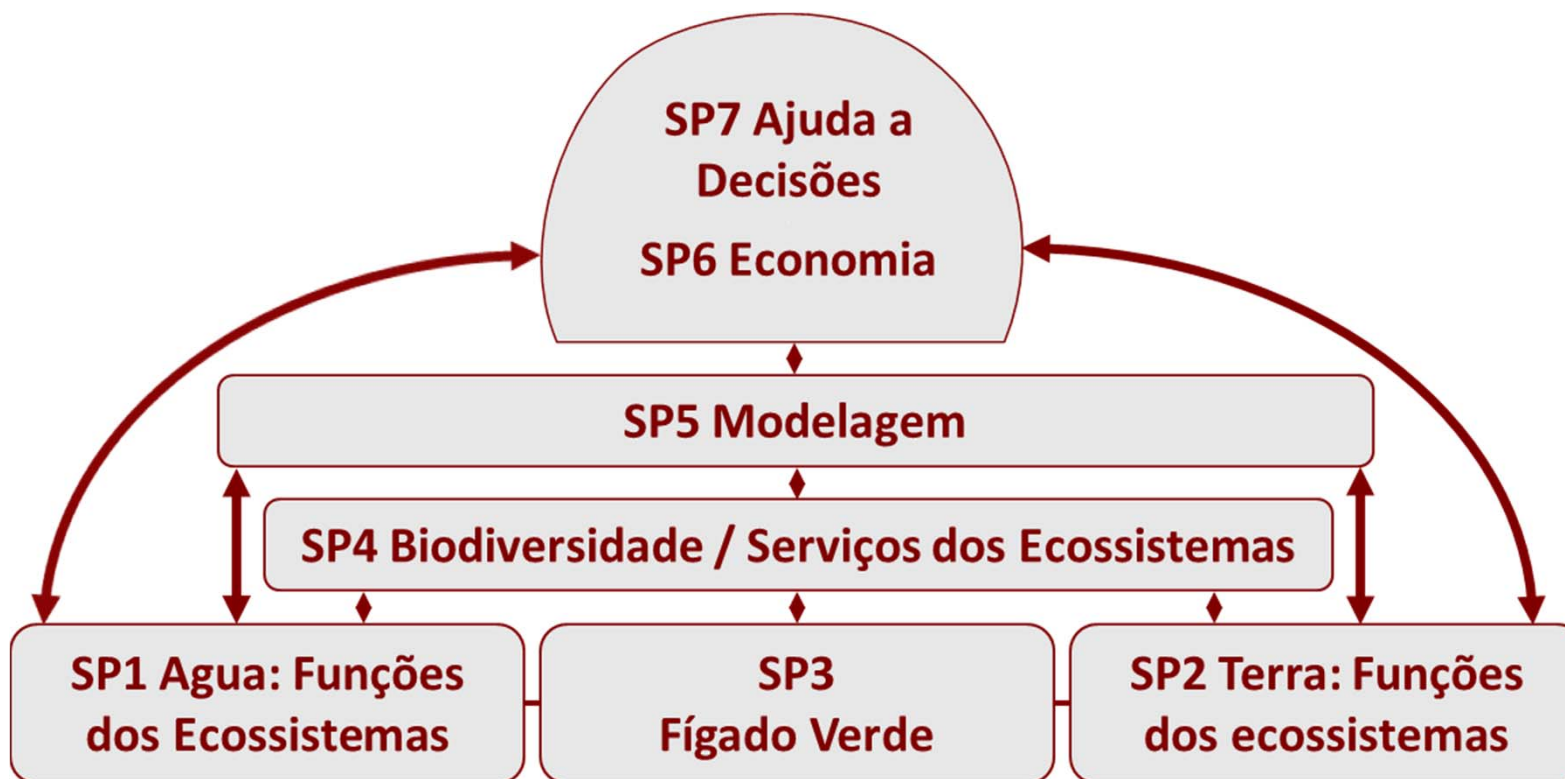


| | |
|--------------------------|--|
| Research question | Which governance options promote sustainable ecosystem services and economic viability under climate change conditions? |
| Research program | German BMBF Research Program “Sustainable Land Management” www.modul-a.nachhaltiges-landmanagement.de |
| Drivers | Watershed management, hydroelectricity usage, climate change |
| Indicators | Biodiversity patterns, economic efficiency, nutrient balances, water use efficiency, C dynamics, stakeholder approval |
| Methods | Surveys, monitoring, experiments, modeling, scenarios, constellation analysis |
| Study site | São Francisco River watershed Itaparica dam |
| Area | Macro level: 377.000 km ² |
| Duration | January 2012 – December 2016 |

Grande – médio – local



Cooperação entre cientistas



INNOVATE Expected Outcomes



| INNOVATE Sub-Project | | Expected Outcomes |
|-----------------------------|---|--|
| SP 1 | Aquatic Ecosystem Functions | Water quality management in reservoirs in semi-arid regions |
| SP 2 | Terrestrial Ecosystem Functions | Soil quality improvement in semi-arid areas / Innovative crop rotations and livestock systems |
| SP 3 | Green Liver | Innovative water purification systems (macrophytes based) |
| SP 4 | Biodiversity & Biotic Ecosystem Services | Caatinga biome conservation and management, also under improved terrestrial ecosystem functions |
| SP 5 | Modelling | (Mitigation and) Adaptation measures of water and land management to climate change |
| SP 6 | Economy | Socio-economic development on different scales, cost-benefit analyses |
| SP 7 | Decision Support Approach | Stakeholder involvement, capacity building, policy implementation, sustainable reservoir management |

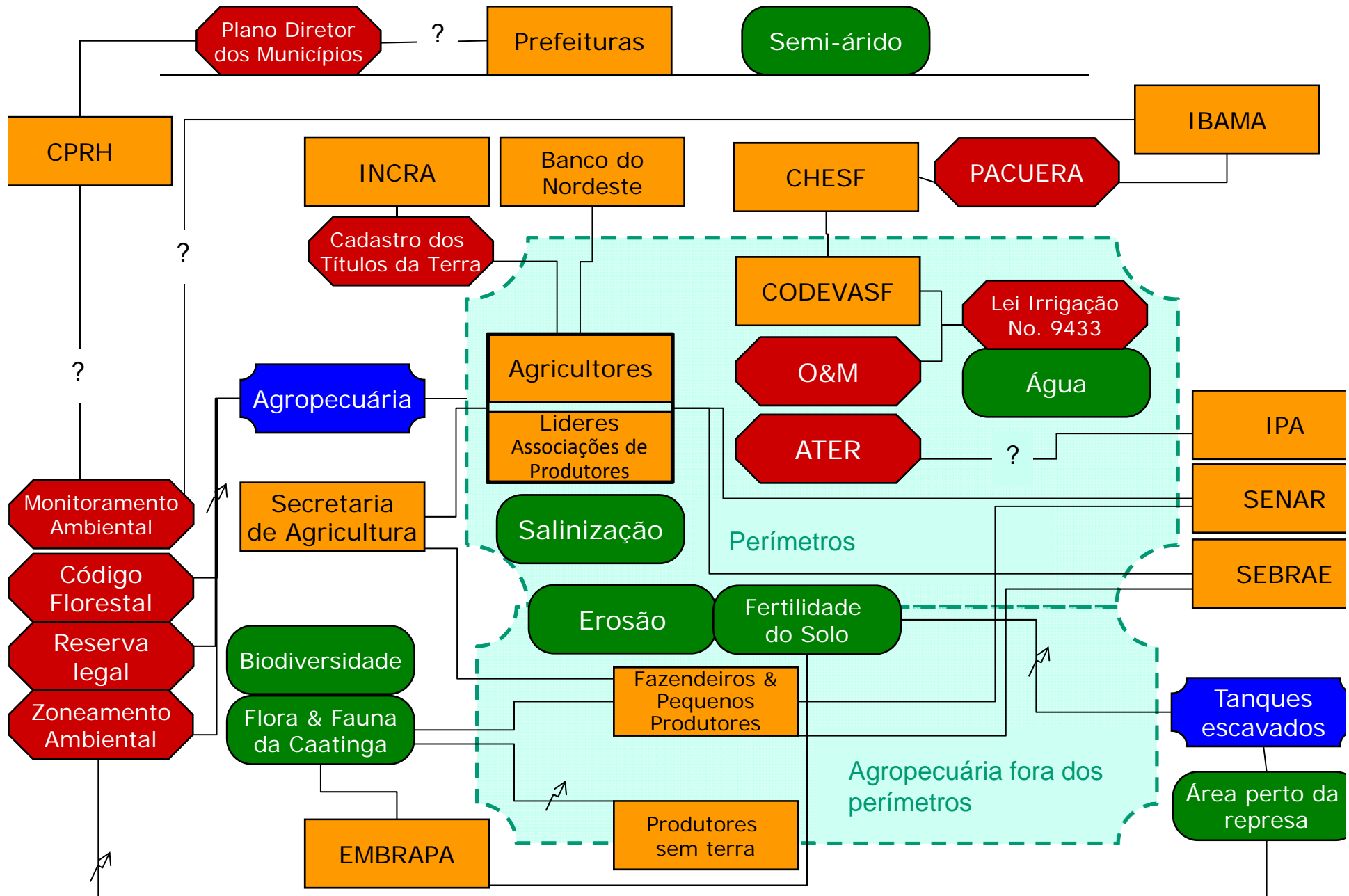
Exemplo: uma visão da situação (constelação) do manejo da terra / da água daqui



Discutimos e tentamos entender juntos:



Manejo da Terra – análise da situação *23 de Outubro 2012*



Cooperação com instituições e grupos da região – com você, o senhor, a senhora...





SPONSORED BY THE
Federal Ministry
of Education
and Research



SENCKENBERG
world of biodiversity

Muito obrigado!

johann.koeppel@tu-berlin.de

www.innovate.tu-berlin.de

